

Cheshire West & Chester Council

Museums, Exhibitions & Events

May - September 2018



GROSVENOR
MUSEUM



Chester
HISTORY
& HERITAGE



Stretton
WATERMILL



WEAVER HALL
Museum & Workhouse



LION
SALT
WORKS



**WEST CHESHIRE
MUSEUMS**



Cheshire West
and Chester

Grosvenor Museum, Chester

27 Grosvenor Street, Chester, CH1 2DD

Located in England's most picturesque city, the Grosvenor Museum's nationally important collections celebrate Chester's cultural heritage. The Roman galleries explore life in the Roman fortress of Deva and display the largest group of inscribed and sculpted Roman stones from a single site in Britain. The paintings and sculpture in the Art Gallery span half a millennium of art in Cheshire, while the Silver Gallery presents the definitive collection of Chester silver. Nine period rooms illustrate changing fashions in domestic interiors from the 17th century to the 1920s. Further galleries explore the area's natural history and display highlights of the costume and coin collections.

Admission free, suggested donation £3

Monday – Saturday 10.30am-5pm, Sunday 1-4pm.



Telephone 01244 972197

Find us on Facebook: Grosvenor Museum and Stretton Watermill

Follow us on Twitter @cwacmuseums

Website: www.westcheshiremuseums.co.uk



Support us

The Grosvenor Museum Society provides vital support for the museum. Members of the society enjoy a full and varied programme of events, including lectures and outings. See www.grosvenor-museumsociety.co.uk

Volunteers

Please see all West Cheshire Museums volunteering roles on the website www.west-cheshiremuseums.co.uk

Disabled access

Full independent access to the ground floor, including Exhibition Gallery One, Lecture Theatre and accessible toilet. No lift to Art Gallery, Costume Gallery or Exhibition Gallery Two on 1st floor.

Exhibitions

Grosvenor Museum, Chester

Until July 2019

Unexpected Elegance: Female Fashion from the 1970s

Costume Gallery

The 1970s are often called 'the decade that taste forgot', but the dresses in this small exhibition show that this was far from true. From minis to midis and maxis, in fabrics ranging from cotton and corduroy to polyester and fake leopard-skin, with designs by Ossie Clark, Givenchy and Zandra Rhodes, we celebrate some of the more subtle pleasures of 1970s fashion.



14 May – 26 August

Chester Mystery Plays

Coin Gallery

Chester's famous mystery plays date back to at least the 15th century. First written by monks and performed by the city's trade guilds, they told Biblical stories such as the Creation, Adam and Eve, the murder of Abel, and the Last Judgement. The plays were suppressed in Tudor times but later revived in 1951 as part of the Festival of Britain and are now performed every five years. This small exhibition tells the fascinating early history of the cycle of plays. The later history, from 1951 onwards, will be explored in *Within the Walls* in Chester's historic Water Tower.

19 May – 7 October

Michael Sandle: Monumental Rage

Exhibition Galleries One & Two,
Art Gallery

(Art Gallery closed 25-26 June & 24 September)

Professor Michael Sandle RA, who studied at Chester School of Art, is widely recognised as one of the finest sculptors in the world and is also a brilliant draughtsman and printmaker. Appropriately for the year in which we commemorate the centenary of the end of the Great War, his powerful work explores the themes of violence, war, death and memorialisation. In direct response to the horrors of our age, his work presents a passionate critique of the abuse of power in global conflict, politics and culture, and the accompanying cynicism and hypocrisy.



#GMMonumental

FLOWERS



The Finnis Scott
Foundation



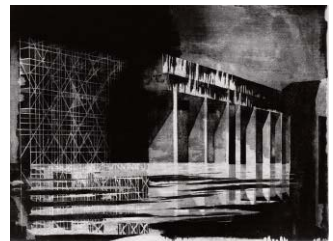
WESTMINSTER
FOUNDATION

The Granada
Foundation

RA250 Royal Academy of Arts with Art Fund



HISCOX



Exhibitions & Family Events

Grosvenor Museum, Chester

Exhibitions

27 June – 23 September Paintings by Rembrandt's Workshop and Teniers from the Grosvenor Family Collection

Art Gallery



Masterpieces of Dutch and Flemish painting are being lent to the museum this summer from the outstanding art collection of the Grosvenor family. Rembrandt (1606-69) was one of the supreme geniuses in the history of art. 'A Man with a Hawk' and 'A Lady with a Fan', painted in 1643 in Rembrandt's studio under his direct supervision, display technical brilliance and a sense of physical presence. 'Saying grace before a meal' and 'Interior of a tavern' exemplify the scenes of Flemish peasant life for which David Teniers the Younger (1610-90) is best known.



Family Events

Children's activities are aimed at 4 to 12 years unless otherwise stated. Children must be accompanied by an adult. Please contact the Museum Shop 01244 972112 for group bookings.

**Mondays 21 May, 18 June,
16 July**

Museum Explorers

Natural Cheshire Gallery

Arrive 9.50am for 10-11am.

Free, suggested donation £1.50.

A new session aimed at ages 2-4 years (younger siblings welcome). We'll be exploring nature's changing seasons and discovering lots of exciting things from the past through play, crafts, stories and songs.

Tuesday 29 May
Steampunk Jewellery

Newstead Gallery

2-4pm, drop-in.

Free, suggested donation £1.50.

Be inspired by Michael Sandle's metallic masterpieces and make a unique piece of steampunk style jewellery to take home.



Wednesday 30 May
Historic Sports Day

Museum Galleries

11am-1pm & 2-4pm, drop-in.

Free, suggested donation £1.50.

From Tudor skittles to hopscotch to classic board games, come and join us in an action-packed sports and games day. Test your skills at some of these historic games.



Thursday 31 May
Giant Paper Flowers

Newstead Gallery

2-4pm, drop-in.

Free, suggested donation £1.50.

It's very nearly summer, so make a huge, scented paper flower to celebrate!



Friday 1 June
1970s Fashion

Newstead Gallery

2-4pm, drop-in.

Free, suggested donation £1.50.

Choose your favourite outfit from our 1970s costume exhibition and then design your own paper version. Plus, help us create a life-size fashion piece to be displayed in the museum!



Family Events

Grosvenor Museum, Chester

Fridays 1 June, 6 July, 3 August, 7 September, 5 October Grosvenor Museum 'Quiet' Afternoons

3-4.30pm, drop-in.

Free, suggested donation £1.50.

Aimed at those who enjoy a 'quieter' visit to the museum, including people living with autism and their families and carers. Wherever possible, we dim the lights and turn the recorded sounds down. Our 'quiet' afternoons are themed, with hands-on activities to engage all ages and abilities. Pre-visit orientation pack available on request from Virginia Kettle on 01244 972120 or virginia.kettle@cheshirewestandchester.gov.uk

Friday 22 – Saturday 30 June Chester Heritage Festival: Telling the story of our city and its people

The city is the stage as walks, talks, films, exhibitions, workshops and special activities for young people bring Chester and its heritage to life. This year the festival embraces the Midsummer Watch parades and the start of the renowned Chester Mystery Plays. See www.visitcheshire.com/chesterheritagefestival for the full festival programme.



Friday 22 – Saturday 30 June Chester Heritage Festival: Active Archaeology

The Cheshire West Archaeology team delivers a series of activities highlighting its work and the finds it has made. Visit our temporary exhibition in the Grosvenor Shopping Centre and handle objects on board special archaeology trains that will run during the Festival on the Chester to Manchester line.

Supported by the Roman Society & Grosvenor Shopping Centre



ROMAN RESEARCH TRUST

Printworks
Chester
printworkschester printworkschester



The Mid Cheshire Line
Community Rail Partnership

Views from Chester Castle

Wednesday 27 & Thursday 28 June

11am, 12noon, 1 & 2pm. £2, booking essential, call 01244 972210 or visit www.visitcheshire.com/chesterheritagefestival.

Meet at the Castle's grand entrance gateway for escorted visits to the Agricola Tower during the Chester Heritage Festival.

Friday, Saturday, Sunday, 20 July – 16 September

10.30am-4pm. Site free; £2 (unless members of English Heritage) to visit the Agricola Tower. For further details see www.westcheshiremuseums.co.uk/chestercastle

Tuesday 31 July Clay Shells Newstead Gallery

2-4pm, drop-in.

Free, suggested donation £1.50.

Explore the shells in the Natural Cheshire Gallery and then join us in making your very own clay shell to take home.



Wednesday 1 August Voices from the Other Side

Exhibition Gallery One

11am-1pm, drop-in.

Free, suggested donation £1.50.

The Grosvenor Museum's Youth Panel presents a light, sound and vision show to highlight Michael Sandle's sculpture inspired by the 1982 Falklands War.

Wednesday 1 August RAF Motto Badges

Newstead Gallery

2-4pm, drop-in.

Free, suggested donation £1.50.

Inspired by the art of Michael Sandle, join us to make some 1980s-style RAF motto badges.

Thursday 2 August Rosettes for Race Day Newstead Gallery

2-4pm, drop-in.

Free, suggested donation £1.50.

The first recorded horse race on Chester's Roodee was in 1539! Celebrate the Chester Races with us by making your own rosette to wear and take home.

Family Events

Grosvenor Museum, Chester

Tuesday 7 August Fans and Windmills

Newstead Gallery

2-4pm, drop-in.

Free, suggested donation £1.50.

Inspired by the paintings by Rembrandt's workshop on loan to us, make a fan suitable for an important Dutch lady or a windmill just like those which Rembrandt might have seen from his window.



Wednesday 8 August Be an Artist

Newstead Gallery

11am-1pm & 2-4pm, drop-in.

Free, suggested donation £1.50.

Come and try your hand at many different artforms, including paper sculptures, weaving, painting by numbers and clay modelling.

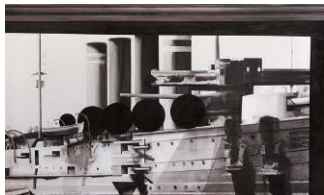
Thursday 9 August Battleships

Newstead Gallery

12.30-2.30pm, drop-in.

Free, suggested donation £1.50.

Inspired by our Michael Sandle exhibition, test your battleships skills by making your very own game to play.



Tuesday 14 August Pesky Pests

Newstead Gallery

2-4pm, drop-in.

Free, suggested donation £1.50.

Museum collections are at risk of attack from insect intruders! See examples of the damage these tiny terrors can cause, and learn how museum staff defend our objects against bothersome bugs. Then make a bug charm bracelet to take home.

Wednesday 15 August Please look after this child!

Newstead Gallery

1-3pm, drop-in.

Free, suggested donation £1.50.

During the Second World War many children – including the artist Michael Sandle – were evacuated from the towns and cities to the countryside where it was safer. Come and spend the day as an evacuee. We'll be packing our suitcases, making moving trains, and discovering country wildlife and animal habitats.



Wednesday 15 August Film: The Railway Children

Lecture Theatre

11am-12.50pm.

Free, suggested donation £1.50.

The classic 1970 film of three children, the people they meet, and the escapades they have around a nearby railway line. Certificate PG.

Thursday 16 August Paper Plants

Newstead Gallery

2-4pm, drop-in.

Free, suggested donation £1.50.

Eliza Potts was a well-known botanist from Chester. She collected plant specimens from across Cheshire and North Wales, and her complete collection is housed and cared for by the Grosvenor Museum. Take a look for yourself in our Natural Cheshire Gallery, and then have a go at making your own paper plants inspired by Eliza.

Tuesday 21 August Suffragette Sashes

Newstead Gallery

2-4pm, drop-in.

Free, suggested donation £1.50.

To help celebrate 100 years of votes for women, come and join us in making your very own Suffragette sash.

Wednesday 22 August Be a Pirate!

Newstead Gallery

1-3pm, drop-in.

Free, suggested donation £1.50.

With *Swallows and Amazons* being performed at Chester's open air theatre this summer, join us for a celebration of all things pirate. We'll be making flags and treasure maps, dressing up, and walking the plank!



Family & Adult Events

Grosvenor Museum, Chester

Wednesday 22 August

Film: Swallows and Amazons

Lecture Theatre

11am-12.35pm.

Free, suggested donation £1.50.

The 2016 film of the much-loved book follows the adventures of four children on holiday in the Lake District. Certificate PG.



Thursday 23 August

Rainbow Boats

Newstead Gallery

2-4pm, drop-in.

Free, suggested donation £1.50.

Ahoy there! Sail along to the Grosvenor Museum and make your very own rainbow boat. Be inspired by the art of Michael Sandle. Who will your crew be?

Tuesday 28 August

Make an Art Deco Desk Tidy

Newstead Gallery

2-4pm, drop-in.

Free, suggested donation £1.50.

Add a touch of style to your study area with an Art Deco inspired desk tidy, and discover how the elegance of Art Deco formed the backdrop to the decadent 1920s.

Wednesday 29 August

Animals in War

Newstead Gallery

1-3pm, drop-in.

Free, suggested donation £1.50.

In response to Michael Sandle's memorial to animals used to aid war efforts, we'll be making origami pigeons, elephant masks, and hobby horses.

Wednesday 29 August

Film: War Horse

Lecture Theatre

11am-12.5pm.

Free, suggested donation £1.50.

This 2011 film follows Albert from England to the battlefields of France, as he looks for his beloved horse Joey. Certificate 12A.



Thursday 30 August

Stained Glass Windows

Newstead Gallery

2-4pm, drop-in.

Free, suggested donation £1.50.

The Grosvenor Museum has some lovely Victorian stained glass windows, including animals, words, and symbols of Chester. Come along and make your own paper 'stained-glass' window to decorate your home.



Adult Events

Every day of the year

Guided Walking Tours of Chester with the Guild of Chester Tour Guides

Meet at the Visitor Information Centre, Town Hall Square

10.30am-12noon & 2-3.30pm. £7,

£6 concessions, tickets from guide.

www.chestertours.org.uk.



Your Guide will lead you on a captivating journey through 2,000 years of history, taking in all the main sites along the way, including the Rows, Walls, River and the exterior of the Cathedral. Discover the rich heritage of this much loved city, beginning in Roman times, through the vibrant period of medieval expansion, the desperation of the Civil War, the Georgian elegance and Victorian revival, right up to the present day.

Also, **The Secret Chester Castle Tour**, 11.30am-1pm, first Tuesday and third Friday of each month. Your Guide will have the keys to unlock the secrets of Chester Castle.

Adult Events

Grosvenor Museum, Chester

Monday 21 & Tuesday 22 May Dementia Awareness Week

Museum Galleries

3-4.30pm, drop-in.

Free, suggested donation £1.50.

Activities aimed at older visitors and people living with dementia and their families and carers, including a 'memories' trail plus art and craft workshops.

Wednesday 23 May Michael Sandle RA in Conversation

Lecture Theatre

2-3pm.

Free, suggested donation £1.50.

Professor Michael Sandle RA is widely recognised as one of the finest sculptors in the world and is also a brilliant draughtsman and printmaker. To celebrate the opening of his exhibition *Monumental Rage*, he joins Dr Cian Quayle, Senior Lecturer in Art and Design at the University of Chester, to discuss his work. Exploring the themes of violence, war, death and memorialisation, his art presents a passionate critique of the abuse of power in global conflict, politics and culture, and the accompanying cynicism and hypocrisy.

A University of Chester event



Thursday 24 May From this day forward: Memories of Weddings in Chester

Grosvenor Park Pavilion &
St John's Church

12noon-4pm, drop-in.

Free, suggested donation £1.50.

Come and enjoy looking at our archives, images and handling objects in the Grosvenor Park Pavilion; visit St John's Church and listen to a talk about weddings through the ages; stroll through the park and enjoy the memories trail. Fully accessible for people using wheelchairs. Refreshments available. Further information from Virginia Kettle on 01244 972120 or virginia.kettle@cheshirewestandchester.gov.uk.

Organised by Grosvenor Museum, Chester History & Heritage, Cheshire Archives, Grosvenor Park and St John's Church



Sunday 27 May Stories, Poems, and Letters from the Front

Lecture Theatre

1.30-3pm.

Free, suggested donation £1.50.

This presentation by Chester Writers and Chester Poets complements the exhibition *Michael Sandle: Monumental Rage*. It includes readings of original war-themed short stories, poems, and some unique unpublished letters to families from soldiers on active service, bringing vividly to life the experiences of men and women at war.

Tuesday 29 – Wednesday 30 May; Monday 9 – Tuesday 10 & Thursday 12 – Friday 13 July Etching Course

The Queen's School, City Walls
Road, Chester

9.30am-4pm.

£140 for 2 days in May, £280 for 4 days in July. Details and booking via www.alistairtucker.org/courses.



Alistair Tucker RBSA leads these etching courses, suitable for both newcomers to printmaking and established practitioners. The classes cover a range of etching techniques. The aim is to offer the practical guidance needed for participants to make the most of their own creative ideas in a professional, friendly and well-equipped environment. Courses are for over 16s and numbers are limited to ensure comfortable workspace



Adult Events

Grosvenor Museum, Chester

Once a month, June – September Art Classes

£10 per person.

In homage to the museum's early life as an art school we are running mostly unstructured art classes in different galleries and using different media. Some have short introductory talks by artists on a particular discipline, others feature objects from our stores as inspiration. These are not tutored classes, but a chance for you to try something new or dabble happily, or do your own work in an inspirational space. All materials (apart from aprons) will be provided, as will refreshments.

Please see

www.westcheshiremuseums.co.uk
for more details

Tuesday 12 June

The 'Enemy' Interned: Germans in Cheshire during the First World War

Lecture Theatre

Doors open 5.30pm, talk 6-7.30pm.
Free, including drinks and snacks.

Before the First World War, Germans had lived and worked across Cheshire as farmers, industrialists and shopkeepers. With the outbreak of hostilities, the number of Germans in Cheshire increased dramatically. However, none of these people had chosen to make Cheshire their home; they were interned in one of the country's largest internment camps in Handforth. This interactive talk uses objects, stories and images to tell the history of Germans in Cheshire during the Great War.

A University of Chester event



Tuesday 19 June

Refugees in crisis? Belgians in Cheshire during the First World War

Lecture Theatre

Doors open 5.30pm, talk 6-7.30pm.
Free, including drinks and snacks.



BRAVE LITTLE BELGIUM

The German invasion of Belgium in autumn 1914 forced millions of Belgians to flee their homeland. 250,000 entered Britain as refugees and approximately 2,000 settled in Cheshire for some or all of the war. Whilst relations between the refugees and locals initially appeared warm and hospitable, documentary evidence – which you can see during this interactive event – shows that life was not always easy for the newcomers.

A University of Chester event



Friday 22 June

Chester Celebrates

Lecture Theatre

7.30-8.45pm. Free.

Join David Cummings for a fully illustrated presentation of Chester's celebratory events, including the Mystery Plays, the City Passion, English Civil War re-enactments, Roman weekends, Diwali, Saturnalia, the Chester Zoo Islands project, Storyhouse and the Grosvenor Park Open Air Theatre, the Lord Mayor's Parade, Great War remembrance and the Mercian Regiment parade, Chester Cathedral and the Ark sculpture exhibition.

Part of Chester Heritage Festival

Tuesday 26 June

The People of Roman Chester

Lecture Theatre

1-2pm. Free.



A chance to learn about some of the people of Roman Chester – men and women, soldiers and civilians, young and old, slave and free. Dr Peter Carrington's illustrated talk is based on the Grosvenor Museum's internationally important collection of tombstones, followed by an optional tour of the Stories in Stone gallery.

Part of Chester Heritage Festival

Adult Events

Grosvenor Museum, Chester

Tuesday 26 June

The Centenary of the First World War: New Directions or Old Histories?



Lecture Theatre

Doors open 5.30pm, talk 6-7.30pm. Free, including drinks and snacks.

In 2012 the British government pledged £50 million to mark the centenary of the Great War. This evening's event sees four historians and heritage experts debate the wider achievements of the centenary: Jenny Macleod (University of Hull), Charlotte Czyzyk (Imperial War Museum), Jasdeep Singh (National Army Museum) and Kathrin Pieren (Jewish Museum, London). This will be a unique opportunity to engage in a conversation about the lasting legacies of the First World War centenary.

A University of Chester event



Friday 29 & Saturday 30 June

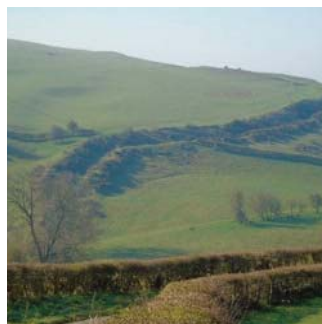
Chester Archaeological Society Conference

Lecture Theatre

Friday 7-9pm, Saturday 10am-4pm.

£18, pre-booking essential:

send cheques payable to Chester Archaeological Society, c/o Grosvenor Museum, 27 Grosvenor Street, Chester, CH1 2DD. For information contact Councillor Janet Axworthy on jaxworthy441@btinternet.com.



Professor Howard Williams will give the keynote lecture on Friday evening entitled *Offa and Wat's Dyke: Reassessment of a Frontier*. This talk will be an excellent taster for Saturday's themes, which range across the English/Welsh border and explore current research and developments. A light lunch will be provided on Saturday.

Organised by the Chester Archaeological Society Part of Chester Heritage Festival

Wednesday 18 July

The Great War: Modernist Art on the Front Line

Lecture Theatre

1.30-3pm. £3, pay at the door.

Join Adrian Sumner for a look at Modernist art recording history. Not only were many of the most important Modernists (such as Paul Nash, Christopher Nevinson and David Bomberg) also Official War Artists, but their style, mostly derived from Cubism and Futurism, was the perfect way of describing the violence and inhumanity of the new, mechanised, industrial warfare. This lecture examines the many theatres of war, including the major contribution made to preserving life at sea by Dazzle patterning, creation of the marine artist Norman Wilkinson.



Thursday 16 August 1950s Afternoon

Lecture Theatre

2-4pm, drop-in.

Free, suggested donation £1.50.

This mixture of film shows, handling sessions and refreshments is aimed at older people, those living with dementia, and their families and carers.

Adult Events

Grosvenor Museum, Chester

Wednesday 19 September

Michael Sandle: Exhibition Tour

Meet in Exhibition Gallery One, then Exhibition Gallery Two & Art Gallery
2-3pm. Free, suggested donation £3.



Professor Michael Sandle RA, who studied at Chester School of Art, is widely recognised as one of the finest sculptors in the world and is also a brilliant draughtsman and printmaker. Appropriately for the year in which we commemorate the centenary of the end of the Great War, his powerful work explores the themes of violence, war, death and memorialisation. Join Peter Boughton, the museum's Keeper of Art, to explore the extraordinary work of this great artist.



Wednesday 3 October

The Art of War: The Many Faces of Global Conflict

Lecture Theatre
1.30-3pm. £3, pay at the door.



After the Great War (not, as it turned out, the War to end all Wars) artists became regular fixtures in the proliferating violence which led to the Second World War and beyond, right down to the present day. This lecture by Adrian Sumner looks at the broadest range of artists recording conflict throughout history, in photography as well as traditional painting and sculpture, treading a line which seeks to avoid the worst of the horror while still telling the truth of the stories.



Corporate Partnerships at the Grosvenor Museum

Help to care for collections, develop exhibitions, and share Chester's exciting culture and history by becoming a corporate partner of the Grosvenor Museum.

As a Corporate Partner you and your business can show a real passion for social responsibility and enjoy a wide range of special benefits including brand exposure to over 80,000 visitors every year and more online.

Membership benefits include:

- Free use of the iconic Victorian lecture theatre for meetings and corporate entertainment
- VIP invitations to private events and exhibition openings
- Sponsor an item on public display
- Enjoy exclusive gallery tours and access behind the scenes at the museum

These are just some of the benefits available to Bronze, Silver and Gold partners. To receive a Corporate Partnership Scheme information pack and to discuss sponsorship opportunities for your business, please contact Richard Hall on 01244 972094 or richard.hall2@cheshirewestandchester.gov.uk



Chester History & Heritage

Grosvenor Museum, 27 Grosvenor Street, Chester, CH1 2DD

Chester History & Heritage has a new home in the Grosvenor Museum, together with many of our books and maps, photographic collections and our popular Family History research service. We are maintaining our wonderful Facebook and website pages which are followed by well over 4,000 history lovers, and you can explore our online imagebank which boasts over 21,000 unique historic images of Chester. We are also the hub for the Heritage Open Days in September – the brochure for these exciting weekends will be available in early summer. We look forward to seeing you all in our new home!

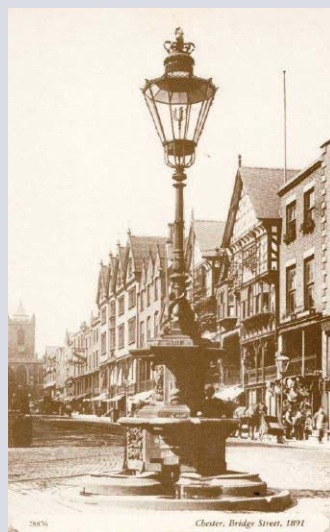
Telephone 01244 972197

Email: CHH@cheshirewestandchester.gov.uk

Find us on Facebook: Chester History and Heritage Centre

Follow us on Twitter @cwacmuseums

Website: www.westcheshiremuseums.co.uk



Stretton Watermill, Farndon

Mill Lane, Stretton, Farndon, SY14 7JA

Step back in time and visit one of the country's best preserved water powered corn mills. First recorded in 1351, Stretton Watermill was a working mill until its last miller retired in 1959. Visit the 19th-century stable block to learn about the history of the mill and explore models of the building and its machinery. One of our millers will then take you on a fascinating tour to see the ancient wooden machinery in action, listen to stories, and have a go at milling grain. Bring a picnic and enjoy the idyllic rural setting with beautiful views of the pond and mill buildings.

Disabled access

Accessible toilet, ramp to first floor of mill.

Telephone 01606 271640
Find us on Facebook: Grosvenor Museum and Stretton Watermill
Follow us on Twitter @cwacmuseums
Website: www.westcheshiremuseums.co.uk

Volunteers

Please see all West Cheshire Museums volunteering roles on the website
www.westcheshiremuseums.co.uk



Admission

Adult £3.50, child (ages 4-16) £1.80, 1 free child for families of 4-7 people. Free for children under 3.

May to August: Tuesday – Sunday and Bank Holiday Mondays 1-5pm.
September: Saturday & Sunday 1-5pm.

Exhibitions

Until 30 September Crafting the Woods

In the trees and woodland on site Following the success of last year's *Woollen Woods*, Stretton Watermill has invited makers to contribute creations to a crafty woodland in its grounds. An array of woolly and woody native flora and fauna are on display, from knitted ladybirds to felted fungi and turned toadstools!



Events

Saturday 8 & Sunday 9 September

Heritage Open Days

1-5pm. Free mill tours, donations welcome.



This is a national celebration of historic buildings and architectural treasures, many of which aren't often open to the public. Our doors will be open free of charge to encourage people to explore the treasures on their doorstep.

Saturday 29 & Sunday 30 September

Victorian Harvest Weekend

12noon-5pm. Mill visit £3, free activities.

Celebrate the traditional harvest with apple pressing (bring your own), butter making, corn dollies, recipes, music, and 'the wonders of the bicycle'. This delightful end to the season captivates all who experience the romance of the mill.



Weaver Hall Museum & Workhouse

162 London Road, Northwich, CW9 8AB

Weaver Hall Museum & Workhouse is full of displays and tales of the history and industry of West Cheshire. The stories are told through films, reconstructions, models and vivid displays of intriguing artefacts, which relate to local industry, market towns, transport, archaeology, and the building's history as the Northwich Union Workhouse. An exhibition in the former workhouse schoolroom explores life for the paupers. Around the rest of the museum you can find out about workhouse food, discover some of the people who lived here, and visit the recreated Master's sitting room.



Admission

Adult £3.50, concession £2.50, child £1.80, family (2+2) £8, pre-booked groups £2.50 per person. Season tickets: adult £6, concession £5, 2 senior citizens & up to 3 children £15, 2 adults & up to 3 children £18. Free to view temporary exhibitions (suggested donation £3) and to visit the coffee shop and gift shop.

Tuesday – Friday, school holiday Mondays & Bank Holiday Mondays 10am-5pm, Saturday & Sunday 2-5pm.

Support us

The Friends of Weaver Hall offer vital support for the museum. Friends enjoy a full and varied programme of events including evening talks and film nights. See www.fowhm.org.uk.

Volunteers

Please see all West Cheshire Museums volunteering roles on the website www.westcheshiremuseums.co.uk

Disabled access

Full independent access is available throughout the museum.



Telephone 01606 271640

Find us on Facebook: [Weaver Hall Museum and Lion Salt Works](#)

Follow us on Twitter [@cwacmuseums](#)

Website: www.westcheshiremuseums.co.uk



Exhibitions & Family Events

Weaver Hall Museum & Workhouse, Northwich

Exhibitions

Until 14 July

Visual Arts Cheshire: Inspirations from the Collections II



The members of Visual Arts Cheshire, a Northwich-based community arts group, have been back exploring the museum stores and creating work in response to some of the more unusual artefacts in our collections.

From 21 July Northwich in Stitch



An exhibition of textile and mixed media work by the Breakaway group, inspired by items in the museum collection, local waterways, structures and the Northwich Union Workhouse which once occupied the museum building.

Family Events

Children's activities are aimed at 4 to 12 years unless otherwise stated. Children must be accompanied by an adult. Please contact 01606 271640 for group bookings

Wednesday 30 & Thursday 31 May Glove Puppets

10am-4pm, drop-in. £1.80 per child.
From a spider to a superhero, make your own hand puppet to take home.



Wednesday 1 & Thursday 2 August Make your own Shield

10am-4pm, drop-in. £1.80 per child.
Prepare yourself for battle and make a shield to take home.



Wednesday 8 & Thursday 9 August Paint a Masterpiece

10am-4pm, drop-in.
£1.80 per child.



Picasso, Lowry, Monet. Just three great Artists. Are you one too? Come and find out. Produce your own masterpiece to exhibit at home.

Wednesday 15 & Thursday 16 August Roman Clay Pots

10am-4pm, drop-in. £1.80 per child.
What did the Romans do for us? Well, Roman pots for one! See some 2,000 year old pottery in the museum then make your own pot.



Family & Adult Events

Weaver Hall Museum & Workhouse, Northwich

**Wednesday 22 &
Thursday 23 August**

Clay Tiles

10am-4pm, drop-in. £1.80 per child.
Make a decorative clay tile to take home



Friday 24 August

Teddy Bears Picnic

12-3pm, drop-in. Free.
Bring your own picnic and join us for a fun filled afternoon of storytelling and crafts, suitable for early years.



Wednesday 29 & Thursday 30
**Build your own
Historic Site**

10am-4pm, drop-in. £1.80 per child.
Stonehenge, the Pyramids or the Lion Salt Works! Build a model of your favourite historical site.

Adult Events

**Fridays 25 May, 29 June, 27 July,
31 August, 28 September**

Craft and Chat

10.30am-12.30pm.
£3, including tea or coffee.
Meet like-minded crafters, learn a new skill, and enjoy a cup of tea in the relaxed setting of Weaver Hall Museum's café. There will be demonstrations and projects to work on. Suitable for all levels of experience.



Wednesday 30 May
Watling Street

3-4pm, with a complimentary tea or coffee from 2.30pm. £1.50.

Find out the history behind this famous 'Roman road' and why it is more than one road, and indeed why it was a road several hundred years before the Roman Empire even existed.



Thursday 14 June

Open Poetry and Music Evening

6-8pm. £5, to book visit www.northwichlitfest.co.uk.
Come along and share a poem or a song, or sit back and listen. Open floor compered by Angela Topping. Guest sets from Angi Holden and Angela Topping. Headline musician Gordon Tyrrell.
A Northwich LitFest event



Adult Events

Weaver Hall Museum & Workhouse, Northwich

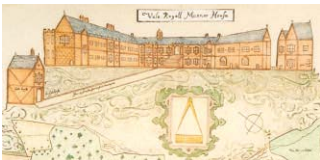
Wednesday 20 June Vale Royal Abbey: A Failed Enterprise

7 for 7.30-9pm. £5, to book visit www.northwichlitfest.co.uk.



This medieval abbey, founded in 1270, later became a country residence and is now a golf club. Intended to be the finest abbey ever built, financial difficulties, gross mismanagement and poor internal discipline created a focus for community discord. Tony Bostock will tell the abbey's story from its establishment until its dissolution in 1538.

A Northwich LitFest event.



Wednesday 27 June Tea and Talk: Visual Arts Cheshire

3-4pm, with a complimentary tea or coffee from 2.30pm. £1.50. The Members of Visual Arts Cheshire, a Northwich-based community arts group, have been back exploring the museums stores and creating work in response to some of the more unusual artefacts in our collections. Find out about what has inspired them.



Friday 14 September Film: Suffragette

7-8.45pm. Free, but booking essential on 01606 271640.



In early 20th-century Britain, the growing suffragette movement changes forever the life of working wife and mother Maud Watts. A chance to see this award-winning 2015 film in our Regalette Cinema, as part of Heritage Open days supported by Townscape Heritage.

Saturday 15 September Heritage Open Days

2-5pm. Free.



Weaver Hall Museum is housed in the old Northwich Union Workhouse, a grade II listed building dating from 1837-39. The displays explore the workhouse history of the site, as well as local history and archaeology. Visitors will get a chance to see the Board of Guardians meeting room, which is not always open to the public.

Wednesday 26 September Who Stayed at Tatton Park?

3-4pm. £1.50.

Join Corey Estensen for an examination of the visitors' book from 1884-1909, when guests to the mansion left behind their signatures, sketches and ephemera. Gain a fascinating insight into a world far removed from modern life; a rarefied world of rank, formality, privilege, but also of artistry, eccentricity and scandal!



Lion Salt Works, Northwich

Ollershaw Lane, Marston, Northwich, Cheshire, CW9 6ES

The Lion Salt Works is a restored historic open-pan salt making site in the village of Marston, beside the Trent and Mersey Canal and close to the remarkable Anderton Boat Lift. This £10 million project opened in 2015 and was voted the UK's Best Heritage project in the 2016 National Lottery Awards. It offers a fascinating journey through the life of the country's last open-pan salt works. When exploring the site and its restored buildings, you will discover how the Salt Works operated and the impact of salt on mid-Cheshire's people, economy and landscape. Your visit will also set the scene for a wider exploration of the footpaths, waterways and attractions of the adjacent Northwich Woodlands and the Weaver Valley.



Admission

Adult £6.25, concession £5.50, child £4, family (2+2) £15.20, concession family (1+3) £14, adult annual pass £18, family annual pass (2+2 or 1+3) £50. Free access to café, gift shop, butterfly garden, play area, canal towpath and car park.

Museum open Tuesday – Sunday & all Bank Holiday Mondays 10.30am-5pm. Play area and butterfly garden open daily 9am-5.20pm.



General Enquiries **01606 275066**
Room Hire and Group Bookings **01606 275040**
Find us on Facebook: **Weaver Hall Museum and Lion Salt Works**
Follow us on Twitter **@cwacmuseums**
Website: **www.westcheshiremuseums.co.uk**



Support us

The Lion Salt Works Trust offers vital support including technical and historical advice, project and grounds development, visitor tours and a regular publication. To become a Salties contact **ngkhunt21@gmail.com**.

Volunteers

Please see all West Cheshire Museums volunteering roles on the website **www.westcheshiremuseums.co.uk**.

Disabled access

Full independent access is available across the whole site.

Exhibitions & Family Events

Lion Salt Works, Northwich

Exhibitions

Until 15 July

Little Leigh and Jabez Thomson

The church at Little Leigh, about three miles from Lion Salt Works, was built in 1878 from bricks, tiles and decorative friezes manufactured in Northwich by the firm of Jabez Thompson. This exhibition explores the mystery of the reredos of the Last Supper and the links between brick works, decorative art and the Lion Salt Works.

Little Leigh Church is open 11am-4pm every Saturday until 14 July.

20 July – 16 November

Letters Home: Communications on the Front

This poignant exhibition displays the collections gathered during the last four years during the Cheshire Great War Roadshows and reveals communications with the Front. Post cards, personal items and letters talk of love and loss, creativity and resilience in the face of great hardship. The exhibition has been curated by award-winning research volunteer, Nigel Meyrick.



Family Events

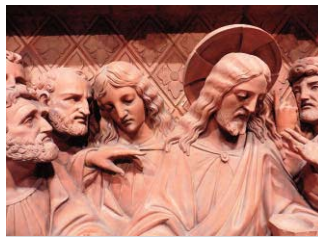
Children's activities are aimed at 4 to 12 years unless otherwise stated. Children must be accompanied by an adult. Please contact **01606 271640** for group bookings.

There is a suggested donation or charge for most events and activities. If you would also like to go round the Lion Salt Works museum and historic core, usual admission charges apply.

Tuesday 29 & Wednesday 30 May Salt Science

10.30am-4pm.
Suggested donation £2.

Salt can be used in lots of different scientific experiments. Come and join us as we have a go at some experiments and be amazed by science!



Friday 1 June Make a Little Leigh Terracotta Tile

10.30am-12.30pm & 2-4pm.
Suggested donation £2.

See if you can spot the differences between the original painting and the amazing terracotta sculpture of the Last Supper. Then recreate a small section of the scene in clay.

Saturday 9 & Sunday 10 June Heritage Transport Festival

10.30am-5pm.
Suggested donation £2.

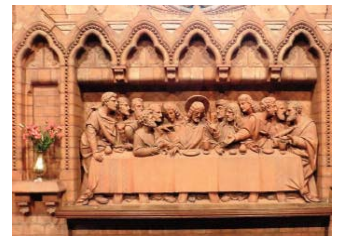


This very evocative festival of a bygone era gives visitors an opportunity to imagine what vintage transport would have been like in its heyday. Visitors can enjoy seeing a range of transport vehicles from the 19th and 20th centuries, including traction engines, miniature steam engines, working narrow boats, vintage cars and commercial vehicles. There is also a series of themed children's activities over the weekend.

Saturday 16 June Angel Day

10.30-2pm.
Suggested donation £2.

Come to the Lion Salt Works and help St Michael and All Angels Church at Little Leigh to fill the church with angels! You can personalise your angel for the church exhibition and make a little angel to take home.



Family Events

Lion Salt Works, Northwich

Tuesday 31 July & Wednesday 1 August Superhero Summer

10.30am-12.30pm & 2-4pm.

Suggested donation £2.

With so many Superhero blockbusters in the cinema this summer, it's only right we do a craft to celebrate our favourite Superheroes.



Tuesday 7 & Wednesday 8 August Alice Garden Party

10.30am-12.30pm & 2-4pm.

Suggested donation £2.

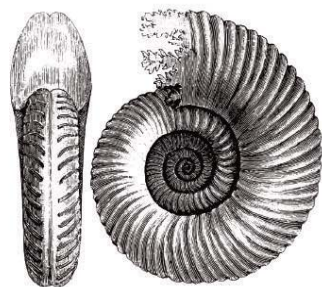
Join us as we celebrate Wonderland! We have a special garden party planned, including games and crafts, all based around Alice and her underground adventure.



Tuesday 14 & Wednesday 15 August Fossil Fun

10.30am-12.30pm & 2-4pm.

Suggested donation £2.



Fossils hold exciting clues about our past. Join us for some fun activities exploring these preserved remains.

Tuesday 21 & Wednesday 22 August The Beano Bonanza

10.30am-12.30pm & 2-4pm.

Suggested donation £2.



This year's Summer Reading Challenge is all around *The Beano*. Come and celebrate your favorite characters by doing some *Beano*-inspired crafts.

Monday 27 August Live and Local presents a Bank Holiday Bonanza

11am-5pm. Free.

Family festival and fun day with outdoor stage, live music, children's activities, stalls, refreshments, hot food and much more. Enjoy the Bank Holiday at this traditional village festival with a contemporary twist, featuring local live bands throughout the day.



Tuesday 28 & Wednesday 29 August Wild at the Works

10.30am-12.30pm & 2-4pm.

Suggested donation £2.

Lion Salt Works is surrounded by nature. Come and have a go at making some crafts inspired by the butterflies and nature around Lion Salt Works.



Adult Events

Lion Salt Works, Northwich

Adult Events

Wednesday 27 June Paradise Lodge

7.30-9pm. £10, book at
www.northwichlitfest.co.uk.



Paradise Lodge examines how we deal with dementia in a thought-provoking and hilarious exploration of identity, reality, love and loss. Vi and Ronnie are in the big lounge to be entertained by a dysfunctional duo called 'The Doodlebugs!'. But Vi wants to join her husband and Ronnie wants to search for his kidnapped family. Trouble is, Vi's husband is dead and Ronnie's family just don't visit. Through a series of flashbacks and comic songs from the war years, Vi, Ronnie and the audience are transported back to a time when they thought they could live and love forever. A Northwich LitFest event

Saturday 21 July Letters Home: Talk and Gallery Tour

2-3.30pm. Free.
Award-winning Great War researcher Nigel Meyrick has curated the *Letters Home* exhibition, drawing together items gathered from local people during the Cheshire Great War Roadshows. Nigel has detailed knowledge of the items in the exhibition and will offer insight and reflection into the authors and recipients of the letters and postcards.



Saturday 21 July A Series of Unscrupulous Events, Part V

7.30-10pm. £7, book in advance at Lion Salt Works 01606 275066.
Join us on the quest, a mysterious adventure through the Portal on a time-travelling journey to solve another unscrupulous event! Free light refreshments.



Saturday 15 September Heritage Open Days Free.



As part of Heritage Open Days, we are offering free admission and a 30-minute guided tour of the unique buildings of the Lion Salt Works.

Saturday 29 September The Salt Works Sessions 7-11pm. £12.50, book at lswsessions@gmail.com.



The first in a series of folk evenings to be held over the coming year. Session 1 will feature Kathryn Roberts and Sean Lakeman, well known in the UK for drawing upon folk tradition's natural backdrops whilst weaving in their own distinctive and eclectic flavours. Twice winners of the BBC Radio 2 Folk Award for 'Best Duo', an evening in the company of this highly respected and much loved couple is intimate, inclusive, warm and inspiring.

Diary



Key

- Grosvenor Museum
- Chester History & Heritage
- Stretton Watermill
- Weaver Hall Museum & Workhouse
- Lion Salt Works

May

- **Monday 21**
Museum Explorers
- **Monday 21**
Dementia Awareness Week
- **Tuesday 22**
Dementia Awareness Week
- **Wednesday 23**
Michael Sandle RA in Conversation
- **Thursday 24**
Memories of Weddings in Chester
- **Friday 25**
Craft and Chat
- **Sunday 27**
Stories, Poems, and Letters from the Front
- **Tuesday 29**
Etching Course
- **Tuesday 29**
Salt Science
- **Tuesday 29**
Steampunk Jewellery
- **Wednesday 30**
Glove Puppets
- **Wednesday 30**
Salt Science
- **Wednesday 30**
Historic Sports Day

● **Wednesday 30**
Watling Street

● **Thursday 31**
Glove Puppets

● **Thursday 31**
Giant Paper Flowers

June

- **Friday 1**
Make a Little Leigh Terracotta Tile
- **Friday 1**
1970s Fashion
- **Friday 1**
'Quiet' Afternoon
- **Saturday 9**
Heritage Transport Festival
- **Sunday 10**
Heritage Transport Festival
- **Tuesday 12**
Germans in Cheshire during the First World War
- **Thursday 14**
Open Poetry and Music Evening
- **Saturday 16**
Angel Day
- **Monday 18**
Museum Explorers
- **Tuesday 19**
Belgians in Cheshire during the First World War
- **Wednesday 20**
Vale Royal Abbey: A Failed Enterprise
- **Friday 22**
Chester Celebrates
- **Tuesday 26**
The People of Roman Chester
- **Tuesday 26**
The Centenary of the First World War

● **Wednesday 27**
Tea and Talk: Visual Arts Cheshire

● **Wednesday 27**
Paradise Lodge

● **Friday 29**
Craft and Chat

● **Friday 29**
Chester Archaeological Society Conference

● **Saturday 30**
Chester Archaeological Society Conference

July

- **Friday 6**
'Quiet' Afternoon
- **Monday 9**
Etching Course
- **Monday 16**
Museum Explorers
- **Wednesday 18**
The Great War: Modernist Art on the Front Line
- **Saturday 21**
Letters Home: Talk and Tour
- **Saturday 21**
Series of Unscrupulous Events, Part 5
- **Friday 27**
Craft and Chat
- **Tuesday 31**
Superhero Summer
- **Tuesday 31**
Clay Shells

August

- **Wednesday 1**
Make your own Shield
- **Wednesday 1**
Superhero Summer

● **Wednesday 1**
Voices from the Other Side

● **Wednesday 1**
RAF Motto Badges

● **Thursday 2**
Make your own Shield

● **Thursday 2**
Rosettes for Race Day

● **Friday 3**
'Quiet' Afternoon

● **Tuesday 7**
Alice Garden Party

● **Tuesday 7**
Fans and Windmills

● **Wednesday 8**
Paint a Masterpiece

● **Wednesday 8**
Alice Garden Party

● **Wednesday 8**
Be an Artist

● **Thursday 9**
Paint a Masterpiece

● **Thursday 9**
Battleships

● **Tuesday 14**
Fossil Fun

● **Tuesday 14**
Pesky Pests

● **Wednesday 15**
Roman Clay Pots

● **Wednesday 15**
Fossil Fun

● **Wednesday 15**
Please look after this child!

● **Wednesday 15**
Film: The Railway Children

● **Thursday 16**
Roman Clay Pots

● **Thursday 16**
Paper Plants

● **Thursday 16**
1950s Afternoon

● **Tuesday 21**
The Beano Bonanza

● **Tuesday 21**
Suffragette Sashes

● **Wednesday 22**
Clay Tiles

● **Wednesday 22**
The Beano Bonanza

● **Wednesday 22**
Be a Pirate!

● **Wednesday 22**
Film: Swallows and Amazons

● **Thursday 23**
Clay Tiles

● **Thursday 23**
Rainbow Boats

● **Friday 24**
Teddy Bears Picnic

● **Monday 27**
Live and Local Bank Holiday
Bonanza

● **Tuesday 28**
Wild at the Works

● **Tuesday 28**
Make an Art Deco Desk Tidy

● **Wednesday 29**
Build your own Historic Site

● **Wednesday 29**
Wild at the Works

● **Wednesday 29**
Animals in War

● **Wednesday 29**
Film: War Horse

● **Thursday 30**
Build your own Historic Site

● **Thursday 30**
Stained Glass Windows

● **Friday 31**
Craft and Chat

September

● **Friday 7**
'Quiet' Afternoon

● **Saturday 8**
Heritage Open Days

● **Sunday 9**
Heritage Open Days

● **Friday 14**
Film: Suffragette

● **Saturday 15**
Heritage Open Days

● **Saturday 15**
Heritage Open Days

● **Wednesday 19**
Michael Sandle: Exhibition Tour

● **Wednesday 26**
Who Stayed at Tatton Park?

● **Friday 28**
Craft and Chat

● **Saturday 29**
Victorian Harvest Weekend

● **Saturday 29**
The Salt Works Sessions

● **Sunday 30**
Victorian Harvest Weekend

October

● **Wednesday 3**
The Art of War: The Many Faces
of Global Conflict

● **Friday 5**
'Quiet' Afternoon

Grosvenor Museum Chester History & Heritage

27 Grosvenor Street, Chester, CH1 2DD



Stretton Watermill

Mill Lane, Stretton, Nr. Farndon, SY14 7JA



Weaver Hall Museum and Workhouse

162 London Road, Northwich,
Cheshire, CW9 8AB



Lion Salt Works

Ollershaw Lane, Marston,
Northwich, CW9 6ES



Accessing Cheshire West and Chester Council information and services

Council information is also available in Audio, Braille and Large Print formats. If you would like a copy in any of these formats or in another language, please email us at equalities@cheshirewestandchester.gov.uk We are also able to provide a British Sign Language (BSL) interpreter to support customers with accessing Council services.

Tel: 0300 123 8 123 Textphone: 01606 867 670
email: equalities@cheshirewestandchester.gov.uk
web: www.cheshirewestandchester.gov.uk